

# SERVICE DATA

## Model S-38E

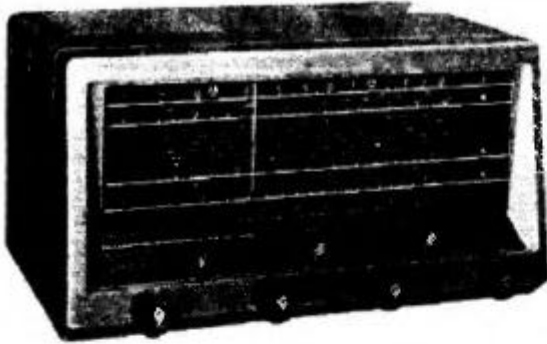


Fig. 1. Hallicrafters Model S-38E

### TUBE AND DIAL LAMP REPLACEMENT

The dial lamp and tubes are accessible for replacement by removing the cabinet. For types used, refer to Page 4.

**CAUTION:** Before attempting to make any replacement, rotate the Bandspread control fully clockwise and the Tuning control fully counterclockwise to prevent damage to the tuning gang.

### TECHNICAL SPECIFICATIONS

TUBES ..... Five including rectifier  
 SPEAKER ..... 5-inch PM; 3.2-ohm voice coil  
 HEADPHONE OUTPUT ..... 15 ohms

ANTENNA INPUT ... For single wire or 52-600 ohm balanced or unbalanced line  
 POWER SOURCE . 105-125 volts DC or 50/60 cycles AC  
 POWER CONSUMPTION ..... 30 watts  
 RECEPTION ..... AM and CW  
 INTERMEDIATE FREQUENCY ..... 455 KC  
 WEIGHT ..... Net-12 lb., Shipping-14 lb.  
 DIMENSIONS ..... 12-7/8" x 7" x 9" deep

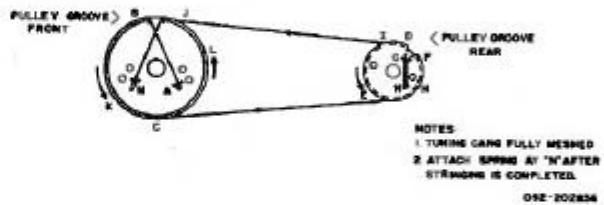


Fig. 2. Main Tuning Gang Drive Stringing Diagram

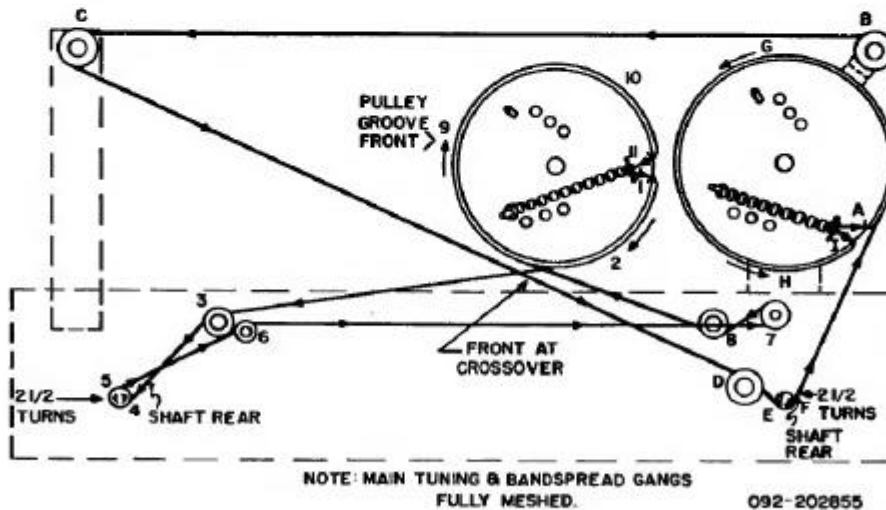
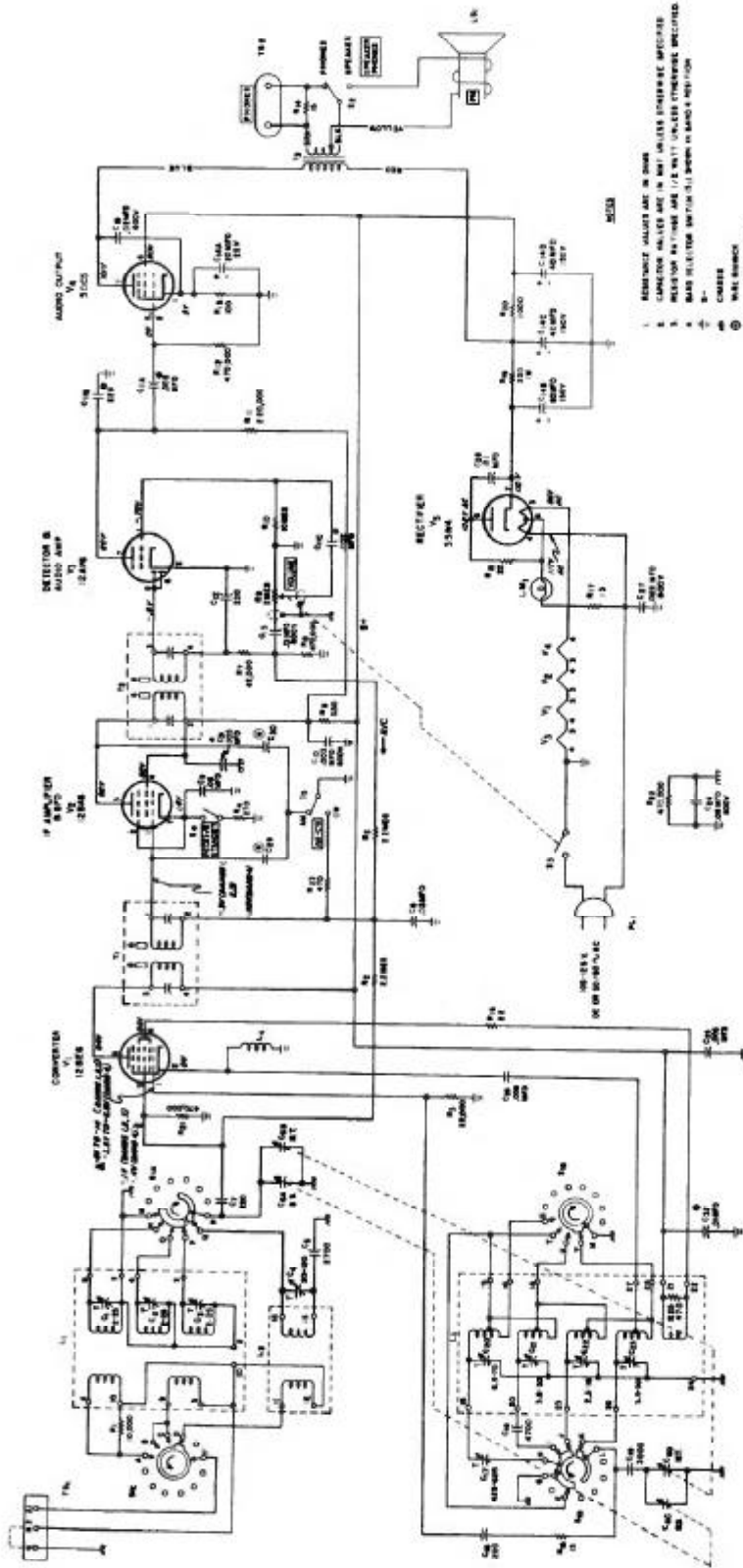


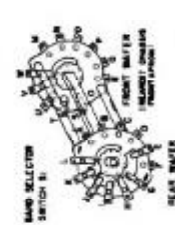
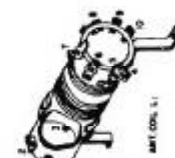
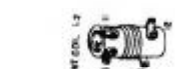
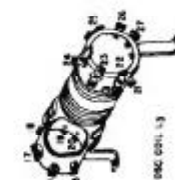
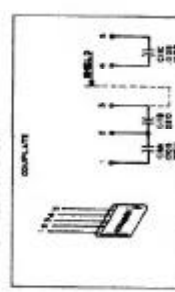
Fig. 3. Main Tuning and Bandspread Gang Pointer Drive Stringing Diagrams

**the hallicrafters co.**  
 4401 W. FIFTH AVENUE • CHICAGO 34, ILLINOIS





- RESISTOR VALUES ARE IN OHMS  
 CAPACITOR VALUES ARE IN MICROFARADS UNLESS OTHERWISE SPECIFIED  
 RESISTOR RATINGS ARE 1/2 WATT UNLESS OTHERWISE SPECIFIED  
 BAND SELECTOR SWITCH (S1) SHOWN IN BAND 1 POSITION  
 C-10  
 C-9  
 C-8  
 C-7  
 C-6  
 C-5  
 C-4  
 C-3  
 C-2  
 C-1



- RESISTOR VALUES ARE IN OHMS  
 CAPACITOR VALUES ARE IN MICROFARADS UNLESS OTHERWISE SPECIFIED  
 RESISTOR RATINGS ARE 1/2 WATT UNLESS OTHERWISE SPECIFIED  
 BAND SELECTOR SWITCH (S1) SHOWN IN BAND 1 POSITION  
 C-10  
 C-9  
 C-8  
 C-7  
 C-6  
 C-5  
 C-4  
 C-3  
 C-2  
 C-1

- RESISTOR VALUES ARE IN OHMS  
 CAPACITOR VALUES ARE IN MICROFARADS UNLESS OTHERWISE SPECIFIED  
 RESISTOR RATINGS ARE 1/2 WATT UNLESS OTHERWISE SPECIFIED  
 BAND SELECTOR SWITCH (S1) SHOWN IN BAND 1 POSITION  
 C-10  
 C-9  
 C-8  
 C-7  
 C-6  
 C-5  
 C-4  
 C-3  
 C-2  
 C-1

# SERVICE PARTS LIST

Schematic Symbol	Description	Hallcrafters Part Number	Schematic Symbol	Description	Hallcrafters Part Number
<b>CAPACITORS</b>			<b>SWITCHES</b>		
C-1, 2, 3	Trimmer, Compression Mica, 3 Section; 3-25 mmf	044-200129	S-1A-B-C-D	Rotary Wafer; Band Selector	060-300161
C-4	20-120 mmf; Ceramic Trimmer	044-100424	S-1, 5	SPDT Slide; Speaker-Phones and AM-CW	060-100477
C-5	2700 mmf, 5%, 500V; Mica	470-412372	S-3	On-Off; Part of R-9	-----
C-6A-B-C-D	Tuning, General Coverage; Inc. Bracket and Pulley	048-302372	S-4	SPST Slide; Receiver-Standby	060-100476
C-6A-B-C-D	Tuning, Band Spread; Inc. Bracket and Pulley	048-000410	<b>SOCKETS AND CONNECTORS</b>		
C-7, 12, 16	220 mmf, 10%, 500V; Mica	470-213221	TS-1	Terminal Strip, Antenna	088-100671
C-8, 15	.02 mfd, 600V; Tubular Paper	499-033203	TS-2	Twin Jack Strip, Phones	088-100071
C-9	.05 mfd, 200V; Tubular Paper	499-013593		Socket, Dial Lamp (Inc. Leads)	088-100122
C-10	.003 mfd, 600V; Tubular Paper	499-034302		Socket, 7-Pin Miniature	068-100106
C-11A-B-C	Printed Circuit Plate, .005 mfd, 220 mmf, .002 mfd	047-100361	<b>TUBES AND DIAL LAMP</b>		
C-13	.01 mfd, 600V; Tubular Paper	499-033103	V-1	12BE6; Converter	090-900040
C-14A-B-C-D	Filter, 4 Section; 20 mfd @ 25V; 60-40-40 mfd @ 150V	048-300091	V-2	12BA6; IF Amplifier and BFO	090-900039
C-17	425-625 mmf; Mica Trimmer	044-100349	V-3	12AV6; Detector and Audio Amplifier	090-901187
C-16	4700 mmf, 5%, 500V; Mica	470-412472	V-4	50C3; Audio Output	090-900541
C-18	3000 mmf, 5%, 500V; Mica	470-412302	V-5	55W4; Rectifier	060-900384
C-20, 21, 22	Trimmer, Compression Mica, 4 Section; 6.5-70 mmf, 2.5-30 mmf, 2.5-16 mmf, 3.5-30 mmf	044-200156	LM-1	Lamp, Dial Type #47	038-100004
C-24	.05 mfd, 600V; Tubular Paper	499-033503	<b>MISCELLANEOUS</b>		
C-25, 26, 31	.005 mfd, 450V; Ceramic Disc	047-100168	Back, Cabinet		032-400754
C-27	.023 mfd, 600V; Molded Tubular Paper	499-034223	Background, Dial (Paper)		032-300748
C-28	.01 mfd, 480V; Ceramic Disc	047-000224	Bracket, Dial Plate Mtg.		089-205169
C-32	.01 mfd, 200V; Tubular Paper	499-013103	Bracket-Left (Glass Retaining)		067-302323
<b>*RESISTORS</b>			Bracket-Right (Glass Retaining)		067-302326
R-1	10K ohms	451-252103	Bracket, Idler, Pulley, and Dial Lamp		067-305191
R-2, 5	2.2 megohms	451-252225	Bracket, Pulley Mtg.		067-305190
R-3	22K ohms	451-252223	Bracket, Switch		067-305192
R-4	270 ohms	451-252271	Bushing, Tuning and Band Spread Shaft		077-301684
R-6	330 ohms	451-252331	Cabinet		068-401794
R-7	47K ohms	451-252473	Clip, Dial Mtg.		076-100646
R-8, 12, 21, 22	470K ohms	451-252474	Clip, IF Mtg.		076-100345
R-9	2 megohms, Variable; Volume Control (Inc. On-Off Switch-S-3)	025-201470	Clip, Dial Lamp Mtg.		076-100660
R-10	10 megohms	451-252106	Cover, Cabinet Bottom		032-300501
R-11	220K ohms	451-252224	Dial Cord (Specify Length)		038-100026
R-13	100 ohms	451-252101	Foot, Mtg.		016-300983
R-14, 15, 17	15 ohms	451-252150	Gasket, Rubber		016-300929
R-16, 18	22 ohms	451-252220	Glass, Dial Window		032-300670
R-19	220 ohms, 1 watt	451-252221	Knob, Band Selector		015-201259
R-20	1K ohm	451-252103	Knob, Band Spread, Off-Volume, or Main Tuning		015-201258
R-23, 25	470 ohms	451-252471	Line Cord and Plug		087-100076
*All Resistors 10%, 1/3 watt carbon type unless otherwise specified.			Line Cord Lock (Male Section)		076-100397-01
<b>COILS AND TRANSFORMERS</b>			Line Cord Lock (Female Section)		076-100397-02
**L-1, C-1, 2, 3	Coil and Trimmer Assembly, Antenna; Bands 1, 2, and 3	051-302132	Pointer, Band Spread		082-300350
L-2	Coil, Antenna; Band 4	051-201015	Pointer, Main Tuning		082-300349
**L-3, C-20, 21, 22, 23	Coil and Trimmer Assembly, Oscillator; All Bands	051-302133	Pulley, 3.125" od		028-200256
L-4	Choke, RF; 540 oh	083-100107	Pulley, 2.875" od		028-200257
T-1	Transformer, 1st IF	090-300831	Shield, Tube		060-100332
T-2	Transformer, 2nd IF	090-300832	Shield, Dial Lamp		068-101249
T-3	Transformer, Audio Output	068-300847	Speaker, 7" PM, 3.2 ohm v. c.		068-300630

\*\*The Trimmer Capacitor Assemblies are also available separately. See "CAPACITORS".

**ERRATA SHEET  
FOR  
MODEL S-38E**

After the service data for your S-38E receiver was published, electrical modifications were made for improved performance. The following amendments to the schematic and service parts list should be made at this time:

1. Correct the high side of C-30 (wire gimmick) to connect pins 5 and 6 of 12AV6. Delete C-30 connection to the plate of 12BA6.
2. Add C-33, a .01 mfd, 450V., ceramic disc capacitor, part number 047-000224. C-33 is wired from pin 6 of 50C5 to chassis.
3. Correct filament string by interchanging pins 4 and 3 of V3 (12AV6). Pin 3 of V3 is wired to chassis, whereas, pin 4 is wired in series with pin 4 of V1 (12BE6).
4. On schematic under the title VOLTAGES, correct item 1 to read, "All voltages are measured between tube socket terminals and B- (pin 3 of 12AV6) with antenna terminals shorted, AM/CW switch at AM, and Receive/Standby switch at Receive."

Pack with Service Data  
#094-901866  
Form #094-901875

**SERVICE OR OPERATING QUESTIONS**—For any further information regarding operation or servicing of your radio, contact your Hallicrafters dealer. The Hallicrafters Co. maintains an extensive system of authorized service centers where any required service will be performed promptly and efficiently at a nominal charge. All Hallicrafters Authorized Service Centers display the sign shown at the right. For the location of the one nearest you, consult your dealer or telephone directory.



4311441-C

## Warranty

"The Hallicrafters Company warrants each new radio product manufactured by it to be free from defective material and workmanship and agrees to remedy any such defect or to furnish a new part in exchange for any part of any unit of its manufacture which under normal installation, use and service conditions such defect, provided the unit is delivered by the owner to our authorized radio dealer, wholesaler, from whom purchased, or, authorized service center, in strict, for examination, with all transportation charges prepaid within sixty days from the date of sale to original purchaser and provided that such examination discloses in our judgment that it is thus defective.

This warranty does not extend to any of our radio products which have been subjected to misuse, neglect, accident, incorrect wiring not our own, improper installation, or to use in violation of instructions furnished by us, nor extend to units which have been repaired or altered outside of our factory or authorized service center, nor to cases where the serial number thereof has been removed, defaced or changed, nor to accessories used therewith not of our own manufacture.

Any part of a unit approved for remedy or exchange hereunder will be remedied or exchanged by the authorized radio dealer or wholesaler without charge to the owner.

This warranty is in lieu of all other warranties expressed or implied and no representative or person is authorized to assume for us any other liability in connection with the sale of our radio products.

948627

*the Hallicrafters co.*

**the hallicrafters co.**

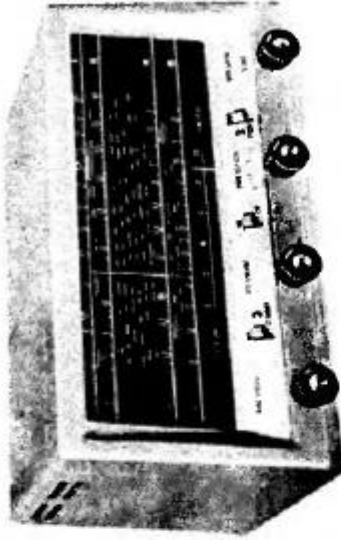
4401 WEST 5TH AVENUE

*Chicago, Ill.*

094-905184-A

# Owner's Guide

Model S-38E



## GENERAL DESCRIPTION

Your new Hallicrafters Receiver tunes from 540 kilocycles to 31 megacycles to bring you the finest in world-wide radio reception. You'll hear foreign and domestic shortwave broadcasts, amateurs, police, aircraft, ships, and countless other exciting distant stations... as well as all your favorite programs on standard broadcast. The receiver employs the latest type superheterodyne circuit and provides for reception of AM (voice) and CW (code) signals over its entire tuning range. Special features in your receiver include an electrical bandspread dial for fine tuning of the amateur and shortwave bands, a powerful built-in Alnico V permanent magnet speaker, provisions for headphone operation, and a receive-standby switch on the front panel that permits you to silence the receiver without turning it off. Your receiver has an unusually high degree of sensitivity necessary to receive weak and distant stations. Careless operation may result in excess noise or background hiss. These undesirable effects can be held to a minimum by careful adjustment of the tuning controls as well as the proper selection and arrangement of the antenna.

## POWER SOURCE

The receiver is designed to operate on 105 to 125 volt 50/60 cycle, AC, or DC current. It may also be operated on 210 to 250 volt AC/DC current by using Line Cord Adapter 087-401566, available as an accessory from your Hallicrafters dealer. Power consumption is 30 watts.

## HEADPHONES

Connections are provided at the rear of the receiver for connecting headphones. Any commercial headphones ranging from 50 to 10,000 ohms may be used. For headphone operation, set the Speaker-Phones selector switch at "Phones".

**the hallicrafters co.**

MANUFACTURERS OF RADIO RECEIVERS AND ELECTRONIC EQUIPMENT, CHICAGO, ILL., U.S.A.



## ANTENNAS

The receiver is designed to operate from either a single-wire antenna, or a half-wave doublet or other tuned antenna. Antenna connections are made to a three terminal strip at the rear of the receiver marked "A1", "A2", and "G".

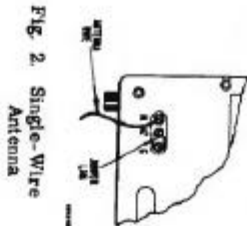


Fig. 2. Single-Wire Antenna

### SINGLE-WIRE ANTENNA

The simplest antenna and one which will provide satisfactory performance throughout the entire tuning range is a conventional single-wire antenna. In most localities, satisfactory results can be obtained with just the 15-foot antenna wire included with the receiver. It is simply necessary to attach one end of this wire to terminal "A1", connect the jumper link between "A2" and "G", and then run the wire about the room in any convenient manner. (See Fig. 2) If the receiver is operated in a steel constructed building or where receiving conditions are exceptionally poor, an outside antenna 50 to 100 feet long may be necessary. In some locations, reception may be improved by connecting a ground wire (ordinary copper wire) from terminal "G" to a cold water pipe or outside ground rod. While the use of an outside ground rod installed in accordance with insurance Underwriter's Laboratories requirements is adequate protection against lightning, we strongly recommend an additional connection to the nearest cold water pipe to eliminate any shock hazard.

### HALF-WAVE DOUBLET ANTENNA

For top performance, especially on the shortwave and amateur bands, the use of a half-wave doublet or other type of antenna employing a 52 to 600 ohm transmission line is recommended. A typical doublet antenna installation is shown in Fig. 3. The doublet antenna should be cut to the proper length for the most used frequency or band of frequencies. The overall length in feet of a doublet antenna is determined by the following formula:

$$\text{Length in feet} = \frac{493}{\text{Frequency in mega-cycles}}$$

For maximum signal pickup, the doublet antenna should be erected with its length at right angles to the desired station. When a transmission line such as "whitlead" or a twisted pair is used, the transmission line connects to terminals "A1" and "A2", and the jumper link between "A2" and "G" is disconnected. The doublet antenna provides optimum performance only at the frequency for which it is cut. Therefore, it may be desirable for reception on frequencies remote from the antenna frequency to utilize the antenna as a single wire type. This is accomplished by connecting the two transmission line leads together and connecting them to terminal "A1". The jumper link in this case should be connected between terminals "A2" and "G".

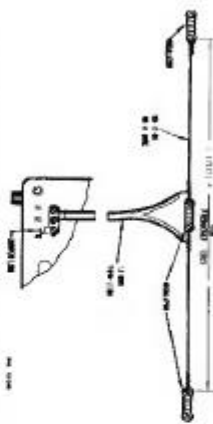


Fig. 3. Doublet Antenna Using T-wire-lead Transmission Line

## TUNING DIAL

The top dial scale is the standard broadcast band. To convert the readings on this band to kilocycles simply add one zero. For example: 70 on the dial is 700 kilocycles. The shortwave bands are marked 2, 3, and 4. The readings on these bands are in megacycles. The standard broadcast band is marked with a "CD" emblem and a dot at 640 and 1240 kilocycles to indicate the two official civilian defense frequencies. In a civil defense emergency, tune to either of these two frequencies for official civil defense news, instructions, and information.

### RECEIVE-STANDBY SWITCH

This switch is normally set at "Receiver". When set at "Standby", the receiver is silenced but the tubes remain at operating temperature for instant use. To resume reception at any time, simply return the switch to "Receiver" position.

### AM-CW SWITCH

Set this switch at "AM" to listen to voice or musical broadcasts. Set it at "CW" only if you wish to hear code signals.

### BAND SELECTOR CONTROL

Set this control for the band you wish to tune. The four positions of this control correspond to the band numbers at the left side of the dial.

### OFF-VOLUME CONTROL

Turn this control clockwise to turn the receiver on and to increase volume. Allow about one minute for the tubes to warm up. When operating on DC (direct current), reverse the power plug in the wall outlet if the receiver does not operate after the one minute warm up, as the receiver will operate ONLY with the plug in one position. When operating on AC alternating current, try reversing the power plug for minimum hum after the receiver is in operation. To turn the receiver off, simply rotate the Off-Volume control fully counterclockwise, until a click is heard.

### TUNING AND BANDSPREAD CONTROLS

Wide tuning is performed with the Tuning control and fine tuning with the Bandspread control. To tune the receiver, set the Bandspread dial pointer at "0" and then slowly turn the Tuning control to the desired station. When trying to locate weak distant stations, it is suggested that the Off-Volume control be initially set near maximum and then readjusted for the desired level after the station has been tuned in. For CW (code) reception, adjust the Tuning control for the desired pitch when tuning in the station. The dial readings will correspond to the station frequencies only if the Bandspread dial pointer is set at "0".

The Bandspread control is an electrical fine tuning adjustment which permits you to accurately tune in stations on crowded bands by spreading them out. It may be used in two different ways. The first method of tuning is used when it is desired to tune in a single signal with precision accuracy. The Bandspread dial pointer is set at about "5", then the signal is located with the Tuning control, and finally the signal is accurately tuned in by "rocking" the Bandspread control (turning it a few degrees to the left and right) until the signal is loudest and clearest. The second method of tuning is used when it is desired to tune through a range of frequencies, such as the amateur bands. Set the Bandspread dial pointer at "0", set the Tuning control for the high end of the selected band or range of frequencies, and then tune through the range with the Bandspread control. Turning the Bandspread control from "0" to "100" tunes the receiver progressively lower in frequency.